



# Cruise Guide

STAR VOYAGER



Tips for smooth sailing from check-in to disembarkation

*For cruises departing from Hong Kong*

# A Star-Studded Cruise Begins With Star Voyager.

Prepare to embark on an unforgettable journey aboard, where adventure meets luxury. Whether you're seeking relaxation, exploration, or excitement, Star Voyager promises an experience like no other.

With Star Voyager, every journey is more than a vacation—it's a voyage filled with discovery, comfort, and memories that will last a lifetime.





## Entertainment

Get ready for endless thrills and entertainment aboard, where every moment brings a new adventure. Relax, explore, and make memories that last a lifetime.

- Adventure Park, Deck 14 MID
- Aqua Park, Deck 15 AFT
- Water Slides, Deck 15 AFT
- Lawn Bowls, Deck 11 AFT
- Little Dreamers Club, Deck 12 AFT
- Shuffleboard, Deck 12 AFT
- The Vibe Check, Deck 7 AFT
- Zodiac Theatre, Deck 7 FWD



## Dining

Star Voyager leaves you spoilt for choice with a variety of dining options. From local delicacies to global favorites - every dish is a star.

- Gelateria, Deck 12 AFT
- Lobby Café, Deck 5 MID
- Oasis Bar, Deck 14 AFT
- Ocean Bar, Deck 7 FWD
- Palm Court, Deck 7 FWD
- Palace Restaurant, Deck 14 FWD
  - Pool Bar, Deck 12 MID
  - Red Tail Café, Deck 8 MID
  - Silk Road, Deck 6 MID
  - Sky Bar, Deck 15 FWD
  - Sophia\*, Deck 6 MID
  - The Lido\*, Deck 14 FWD
  - Blue Lagoon, Deck 14 FWD
- The North Star Dining Room\*, Deck 5 AFT
- Velvet Lounge, Deck 7 MID

\*Inclusive restaurants



## Beauty & Wellness

Unwind in style with our ultimate wellness experience.

Rejuvenate, power up, or transform your look with our exclusive wellness facilities.

- Symphony Fitness, Deck 12 AFT
- Symphony Salon, Deck 12 AFT
- Symphony Spa & Wellness, Deck 12 AFT
- Symphony Studio, Deck 12 AFT



## Retail

Discover exclusive finds and luxury deals at our boutique.

Shop duty-free items, trendy fashion, and unique souvenirs as you cruise.

- The Starlight Boutiques, Deck 6 MID



# THE PALACE

The Palace is our all-suite concept within StarCruises for anyone who chooses to experience the best of Asian hospitality and exuberant living.

## All-Inclusive Privileges

- 1 All-Suite Accommodations
- 2 24-hour Butler Concierge
- 3 All-Indulgent Benefits
- 4 All-Encompassing Spaces

Approach our **Reception** to find out how you can upgrade to The Palace.

### ON YOUR ARRIVAL

- Access to VIP lounge at terminal
- Priority check-in with butler assistance
- Fast track security clearance
- Priority luggage check-in and check-out with express delivery

### IN YOUR SUITE

- 24-hour butler concierge service
- Free Standard Wi-Fi package throughout cruise
- Luxurious linens
- Premium bath amenities
- Capsule Coffee Machine & Tea
- Welcome minibar beverages and snacks
- Welcome fruit plate and delights
- Pressing service
- Fresh flower arrangement in Palace Penthouse
- Premium fresh fruits with chocolate truffle for Palace Penthouse

### WHEN YOU DINE

- Exclusive access to The Palace Restaurant with complimentary dining, featuring premium delicacies and special menu items
- Set meal entitlements at designated specialty dining restaurants
- Complimentary healthy meal options in The Palace Restaurant
- Complimentary in-suite dining for Palace Villa guests
- Happy Hour with complimentary drinks such as selected wines, beers and non-alcoholic beverages at selected venues
- Free-flow of chilled juices, Chinese and Japanese teas, and coffee throughout the day at selected venues

### WHEN YOU EXPLORE

- Priority access to live shows
- 10% Off In-House Retail Items and Spa Services

*Privileges are subject to change without prior notice.*

# BALCONY CLASS

Experience New Upgraded Oceanfront Living

## Key Benefits



Welcome Drink  
(Soft Drink/Beer/  
House Pour)



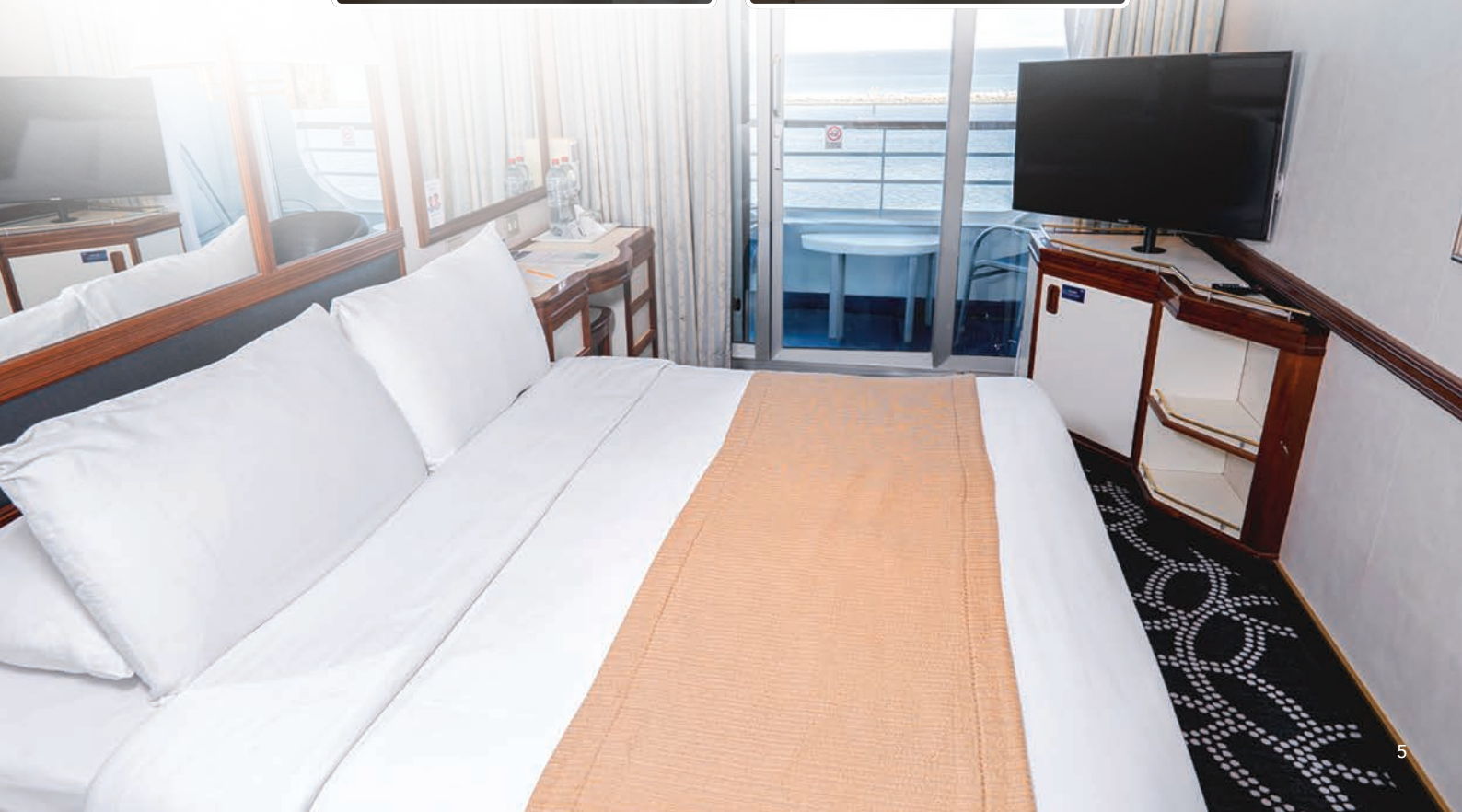
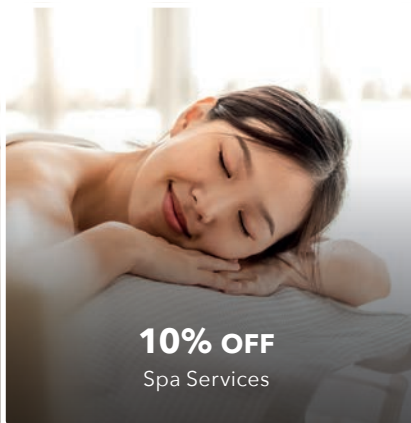
Designated Check-In  
& Priority Luggage  
Handling Services



Full In-Cabin  
Amenities



Designated  
Seating for Shows  
(Zodiac Theatre)



# Before Cruise

## PACKING ESSENTIALS



Mandatory online check-in is available and closes 48 hours before departure.



Applicable VISA requirements and Cash (in Hong Kong Dollars) and Credit Cards.



Passport (with at least 6 months validity), a soft copy or photocopy of passport, HKID, Cruise Ticket & applicable travel VISA(s).



Proper swim attire is required for waterslides and pools. Sneakers / closed-toe shoes are needed for the rock wall and zip line.

## PROHIBITED ITEMS



- Firearms, including replicas, imitations and their components, air-, BB-, pellet- pistols, rifles or other projectile-weapon, Ammunition, explosives, including imitation explosives and devices.
- Crossbows, crossbow bolts and long bow arrows.
- Blunt weapons including knuckle dusters, clubs, coshes, batons, flails or nunchaku.
- Stun Devices or other items made or intended for use as an offensive weapon.



Items containing any kind of heating element, such as but not limited to, immersion heaters, heating blankets, flat irons, water heaters, coffee machines with heating / hot plates, etc.



- Fireworks, flares, pyrotechnics, candlelight, incense, flammable substances and hazardous chemicals.
- Compressed gas tanks, bottles and cylinders including dive tanks, propane tanks and aerosol cans.



- Any illegal narcotics/drugs.
- Items containing incapacitating substances (e.g. gas guns, tear gas sprays, mace, phosphorus, acid and other dangerous chemicals that could be used to disable)



Sharp pointed weapons including throwing stars, knives, open razors, spears or spear guns



- Emergency Position Indicating Radio Beacons (EPIRB), ham radios, satellite phones, transformers, lasers and laser pointers.
- Remotely controlled or autonomously flying devices, toys or drones.
- Self-balancing hover boards, air wheels, scooters, or Segways and large batteries.
- Any other items that might endanger the safety and lives of passengers and crew on board.

## DEPARTURE DAY



Arrive at the terminal at assigned time on Cruise Ticket



Check-in Luggage



Collect Cabin Card

**Ocean Terminal**  
2/F, Cruise Passenger Hall, Ocean Terminal Extension Building,  
Harbour City, Tsim Sha Tsui, Kowloon, Hong Kong

# During Cruise

## WI-FI



### StarCruises Concierge

Connect to StarCruises Wi-Fi to get more information for onboard entertainment, programmes, dining, excursion and more.



### Wi-Fi Packages (in HKD)

Package	24 Hours	2 Nights	3 Nights	5 Nights
Standard - 1 Device	110	-	-	-
Standard (Full Cruise) - 1 Device	-	136	204	340
Standard (Full Cruise) - 2 Devices	-	240	360	600
Standard (Full Cruise) - 3 Devices	-	370	555	925
Standard (Full Cruise) - 4 Devices	-	470	705	1,175
Premium - 1 Device	178	-	-	-
Premium (Full Cruise) - 1 Device	-	200	300	500
Premium (Full Cruise) - 2 Devices	-	380	570	950
Premium (Full Cruise) - 3 Devices	-	576	864	1,440
Premium (Full Cruise) - 4 Devices	-	720	1,080	1,800

**Standard:** Connect to the Internet at basic speeds    **Premium:** Connect to the Internet at prime speeds

### Gratuities Fee Scheme (Per Person in HKD)

Stateroom Type	2 Nights	3 Nights	5 Nights
Palace	480	720	1,200
Balcony	400	600	1,000
Interior & Oceanview	320	480	800

Charges waived for children aged below 2

## SAFETY PRACTICES



Keep your Cabin Card with you at all times



If you feel unwell, please proceed to the medical centre

# Before Disembark

## QUICK PAY - SELF CHECK-OUT

### Save your time on queuing up for payments!

Prior to disembarkation, please ensure that all outstanding bills are cleared.

- Check your cabin charges
- Settle your bill with VISA or MASTER instantly or enjoy Quick Pay - Self Checkout service



Payment types accepted at Reception, Deck 5 Mid



# Disembarkation

Disembark at the assigned time and refer to the StarCruises Concierge for more details.



**Experience unforgettable memories aboard Star Voyager, where excitement meets elegance.**



**starcruises.official**

WEBSITE

**www.stardreamcruises.com**

EMAIL

**reservations.en@stardreamcruises.com**

HONG KONG

**+852 800 938 887**

INDIA

**+91 9090-70-9797**

MALAYSIA

**1800 814852**

TAIWAN

**0080 149 8887**

SINGAPORE & ALL OTHER MARKETS

**+65 800 8528188**